

[View this email in your browser](#)



## Women's Forest Congress UPDATE

February 2022

---

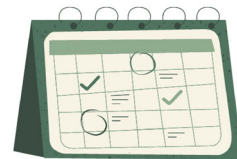
### Join the WFC's March 8 Virtual Gathering, Celebrating International Women's Day

[REGISTER NOW](#) to join the **Women's Forest Congress** on March 8, 2022, from 3:30-5:00pm ET/2:30-4:00pm CT/1:30-3:00pm MT/12:30-2:00pm PT to celebrate what's happening in 2022 with the Women's Forest Congress, be inspired by the work and leadership of women to challenge bias in natural resources and learn a bit about how we can all support each other on International Women's Day! **Registration is free but limited to the first 300 individuals** who register, so [save your space](#) today.

And while you're at it, go ahead and save the date for our other 2022 events. Simply click the buttons below to download save the dates to drop into your calendar. Registration information will come soon.



**June 8, 2022**  
(Virtual)



**Oct. 17-20, 2022**  
(Minneapolis, MN, USA)

---

### WFC Needs Your Help to Make History

Organizations and individuals, aligned with the Women's Forest Congress [Mission and Vision](#), are invited to be an integral part of the Women's Forest Congress. Your support will ensure the inaugural 2022 Women's Forest Congress is a success, including engagement leading up to and following the event as well as the extraordinary community forming around the movement.

Your sponsorship or donation will directly support ongoing communications, virtual events leading up to the in-person event, and the volunteer-led Steering Committee, Advisory Council and Working Groups. It will also support the development and hosting of an historic and catalytic inaugural event in October 2022 as well as the overall movement to position and learn from women as leaders in the forest community. [Download](#) our sponsorship prospectus to learn more about available sponsorship opportunities.

---

## COVID-19 Impacts on Women in the Forest Sector - Reminder Email Coming Soon

Drs. Jessica Leahy (University of Maine), Leah Rathbun (North Carolina State University) and Asia Downtin (Michigan State University) are conducting a survey of women in the forest sector regarding COVID-19 impacts. Be on the lookout for a reminder email soon, if you haven't already responded.

The purpose of the study is to 1) Describe the range of career impacts COVID-19 has had on women in the forest sector; 2) Identify segments and differences in perceived impacts of COVID-19 on women in the forest sector; 3) Examine the relationships between the internal organization of the workplace (e.g., leadership, pandemic responses) and perceived COVID-19 career impacts; and 4) Evaluate women's preferences and needs in regards to COVID-19 and other related workplace policies, such as family leave and working from home. If you have questions regarding the survey, please [contact us](#).

---

## Get Social with WFC

Join our LinkedIn Group to network with Women's Forest Congress supporters and advocates. If you are active on LinkedIn, look for the "[Women's Forest Congress Networking Group](#)" and join the conversation. We welcome your engagement in this new networking space. Share articles of importance, job announcements, upcoming events of interest, best

The Women's Forest Congress is also active on [Facebook](#), [Twitter](#), and [LinkedIn](#). We have pages/profiles on each channel and share content relevant to the forest community and women's issues, so like, follow, and share with your network and tag with #WeAreWFC.

---

## Fun Fact of the Month

#DYK Valentine's Day (Feb. 14) is the second-largest holiday for sending greeting cards. According to [Hallmark](#), over 145 million Valentine's cards are exchanged each year. As a large paper user, it's no wonder Hallmark's [corporate sustainability strategy](#) focuses "on three key areas where we know we can make a difference: taking care of our forests, the sustainability of our products and packaging, and how we are caring for the climate."

---

***THERE IS A NEED – ARGUABLY TODAY MORE THAN EVER – FOR DIVERSE PERSPECTIVES TO HELP ENSURE THE HEALTH AND FUTURE OF FORESTS.***

---



---

*Copyright © 2022 Women's Forest Congress, All rights reserved.*

**Website: [www.womensforestcongress.org](http://www.womensforestcongress.org)**

Want to change how you receive these emails?  
You can [update your preferences](#) or [unsubscribe from this list](#).